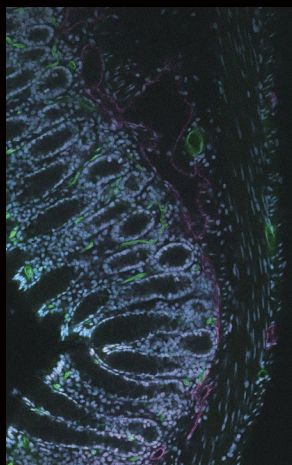


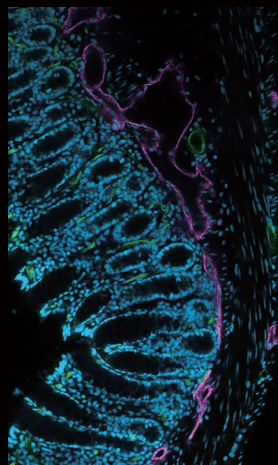


Nikon Microscopy and Image Analysis Workshop

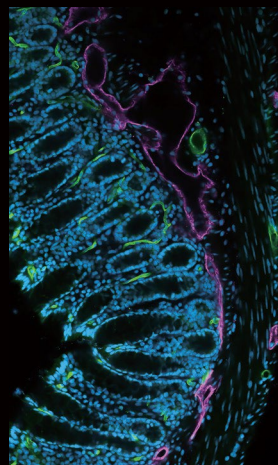
Learn to harness Nikon software and artificial intelligence to image and analyze your data faster



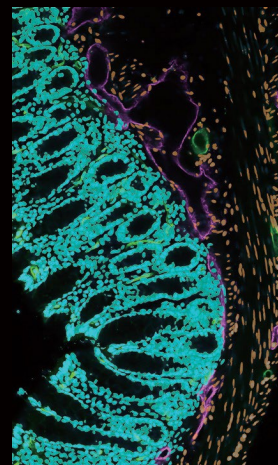
Original Image



Autosignal.ai automatically suggests the best illumination and detection settings.



Denoise.ai removes the shot noise component of images, increasing clarity.



Segment.ai assists users in fast and easy segmentation of images.

Hosted by:
Light Microscopy Imaging Center at IU Bloomington

Dates: January 22-24, 2025

Location: Myers Hall , Rm 059



ECLIPSE Ti2-E

The ECLIPSE Ti2-E inverted research microscope for advanced research applications



Contact Shawn Burden (shawn.burden@nikon.com) to sign up for the event and schedule time on the equipment or scan the QR code.

